

Dear Friends,

Turning the page on 2020 felt like finishing an epic novel, with triumphs and challenges that tested the Episcopal Retirement Services (ERS) team like no other in our 70-year history.

We held firmly to our mission and persisted with innovation, empowerment, and focus to assist and protect the 3,700 elders we serve across Ohio, Kentucky, and Indiana, as well as our staff during the historic pandemic.

The annual report on the following pages highlights our financial position and success stories from a truly unforgettable year.

Here are some noteworthy updates from 2020:

- **Episcopal Church Home (ECH):** The master plan continued on time and budget as we retool to meet the needs of older adults in Louisville. ECH launched the \$18.5 million renovation project in the spring. By December, the 26 memory-care and 26 skilled-care apartments neared completion, and the models for the new patio homes were underway.
- **Affordable Living by ERS:** Development projects progressed throughout 2020, and ERS earned Low-Income Housing Tax Credits to renovate additional buildings in our Wilmington community. Kathy Ison-Lind, VP of Affordable Living and In-Home Services, prepared to retire, and ERS searched for an affordable housing expert to take that part of her role. In the first quarter of 2021, Kathy retired, and ERS hired Dr. Jimmy Wilson as VP of Affordable Living. See pages 8–9.
- **Middle Market:** In partnership with Ridge Stone and McCarthy Builders, we opened the pilot middle-market community in Perrysburg, Ohio, for the underserved senior market, those who cannot afford a traditional retirement community but have more income than the limit on our affordable living communities. We promoted Megan Bradford to VP of Middle Market and Ministry to lead this effort. See story on page 6.
- **The Center for Memory Support & Inclusion:** The Center is part of a three-year, fully-funded pilot program designed to support seniors living with dementia—across not only ERS’s retirement communities but also the greater Cincinnati area. Thanks to several philanthropists’ generosity, Shannon Braun joined ERS in 2020 and leads The Center as its Director, and the center was launched late last winter. See Q&A on page 10.

In response to national unrest last May, the Servant Leadership Team began hosting a series of “safe space” conversations about bias, racial injustice, and anti-racism training we call We Can Do Better. This imperative work continues, and we will present our progress in the next Linkage magazine.

Our eighth decade of serving elders began in 2021. We are constantly grateful for our volunteer board’s strong leadership, guidance, and encouragement. To every resident, family member, donor, and partner thank you for your unwavering support and continued commitment to ERS and our mission. Your dedication in 2020 helped ERS exceed all expectations of what our organization can accomplish in the face of historical challenges.



Sincerely,

A handwritten signature in blue ink that reads "Laura R. P. Lamb".

Laura R. P. Lamb,
President & CEO

Episcopal Retirement Services is expanding its mission to improve the lives of older adults through quality senior living communities and community-based services throughout Ohio, Kentucky, and Indiana.

5,998

Individuals served through ongoing support or impacted by community outreach programs.



The Affordable Living by ERS communities

- | | | |
|--|--|--|
| A Canterbury Court | I Thomaston Woods | Q Westminster Court (3)
Westminster Court I & II,
Esther Tuke |
| B Cambridge Heights | J Thomaston Meadows | R Marlowe Court |
| C St. Paul Village (2)
St. Paul Village I & II | K Green Hills Affordable Living | S Maple Knoll Meadows |
| D St. Pius Place | L Trent Village | T Madison Villa |
| E Shawnee Place | M Walnut Court | U New Carlisle Village (2)
Rachel Court, Sunrise Terrace |
| F The Elberon | N Central Parkway Place | W The Manse |
| G Forest Square | O Knowlton Place | X Scheper Ridge |
| H Parkview Place | P Prairie Oaks Village (4)
Prairie View, Friendly Center,
Quaker & Mulberry Place | |

2020 Overview and Financial Report*

The financial information below is for the year ending December 31, 2020. This financial information is based on preliminary, unaudited financial data compiled by the staff of Episcopal Retirement Services. This information will be subjected to independent external audits with final reports available upon request after May 31, 2021. The 2019 financials reflect the final independent audited reports performed in 2020.

Condensed Balance Sheet As of December 31, 2020

Assets	2020	2019
Current Assets	\$27,536,477	\$26,114,113
Investments and Reserves	\$40,110,004	\$36,792,536
Fixed Assets	\$189,727,482	\$193,639,412
Beneficial Interest in Endowments	\$36,776,884	\$34,664,581
Other Assets	\$4,678,231	\$5,106,911
Total Assets	\$298,829,078	\$296,317,553

Liabilities	2020	2019
Current Liabilities	\$18,564,094	\$16,926,766
Unamortized Entrance Fees	\$24,767,759	\$26,374,688
Long-Term Debt	\$80,304,419	\$82,344,062
Other Liabilities	\$9,735,769	\$8,313,774
Total Liabilities	\$133,372,041	\$133,959,290

Net Assets	2020	2019
Total Net Assets	\$165,457,037	\$162,358,263
Total Liabilities & Net Assets	\$298,829,078	\$296,317,553

Condensed Statement of Revenue and Expenses For the year ending December 31, 2020

	2020	2019
Operating Revenue	\$59,641,205	\$59,489,555
Operating Expense	\$(71,264,372)	\$(70,948,035)
Net from Operations	\$(11,623,167)	\$(11,458,480)

	2020	2019
Non-Operating Revenue (Expense)	\$8,016,566	\$8,983,302
Total Net Loss	\$(3,606,601)	\$(2,475,178)

*2020 financials are unaudited at time of report

2020 Contributions and Commitments

\$979,525
Good Samaritan Mission
Annual Gifts

\$860,849
Planned Gifts Realized
in 2020

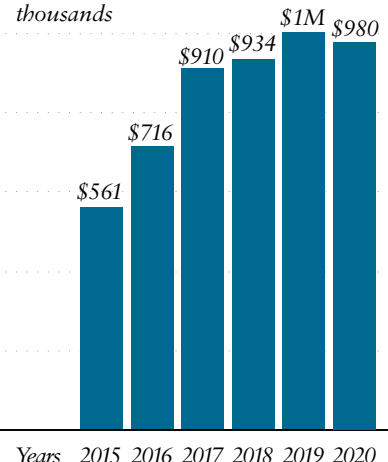
\$273,919
Emergency Response Fund*

\$135,936
Capital Gifts and
New Programs

*In addition, an estimated \$100,000 in in-kind gifts, primarily food, was donated in 2020 through the Emergency Response Fund.

Growth in Giving to Good Samaritan Mission

Donations in
thousands



The Good Samaritan Mission Fund

\$3.1 Million

Total Ministry Costs

\$2.13M

Residential Financial Aid

\$397,503

Affordable Living by ERS

\$298,680

Spiritual Care

\$195,297

Parish Health Ministry

\$78,077

The Staff Assistance Fund

\$24,630

Volunteer Coordinators

\$14,990

Community Outreach programs

\$9,468

Partners In Care Fund

\$1,200

SAIDO Learning® Tuition Assistance

\$0*

Deupree Meals On Wheels

*The Meals On Wheels program experienced 40% growth in meals, 56% growth in clients, costs and staff levels were maintained while reimbursement increased. Therefore, 2020 ministry costs were \$0.

Ministry for residents or through on-going support

3,706

Individuals served as residents or through on-going support

1,898

Affordable Living Residents

729

Deupree Meals On Wheels Clients

572

Skilled Nursing Care Residents

340

Independent Living Residents

74

Assisted Living Residents

43

Living Well Senior Solutions Clients

35

Student Educational Experiences

15

Pete's Eats Clients

Ministry through community outreach programs

2,292

Individuals impacted by community outreach programs

1,851

Parish Health Ministry Contacts

420

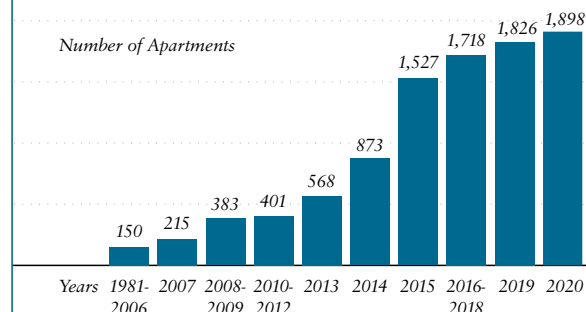
Community Outreach Education Event Participants

21

Parish Health Ministry Training Attendees

Growth in Affordable Living by ERS

Number of Apartments



Deupree Meals On Wheels Doubles Deliveries in 2020

An unprecedented pandemic came with unprecedented demand for the Deupree Meals On Wheels ministry. *By Elizabeth Miller Wood*



Volunteers Betsy Babb and Scott Clark stepped up to support the team with dedication, positivity and creativity.

In a typical year, Deupree Meals On Wheels delivers approximately 130,000 meals throughout Hamilton County via more than 70 volunteers. However, 2020 was anything but typical, and quarantine protocols caused a dramatic surge in demand. By year's end, the ministry had delivered over 180,000 meals to 729 clients and boasted 126 volunteers giving over 1,600 service hours.

"We were overwhelmed with the response from people in the community that came to us and said they wanted to deliver meals," says Tsippy Gottlieb, director of Deupree Meals On Wheels. Manpower support flooded in from church groups, hospital staff, police and fire departments, and other members of the community.

The pandemic's challenges presented Deupree Meals On Wheels with ample opportunities to innovate, which the team enthusiastically embraced.

When homebound seniors needed personal care items, Deupree Meals On Wheels assembled a selec-

tion of 40 items, such as shampoo and conditioner, to deliver alongside meals. Microwaves and shelf-stable meals were given to those who ate at irregular hours. The team also provided pet food for clients' furry companions.

For those undergoing chemotherapy who couldn't stomach standard menu options, volunteers accommodated off-menu food requests. To ease the emotional toll of social distancing, tablets were provided to clients for virtual visits with volunteers. At Christmas, one volunteer delivered meals dressed as Santa Claus to raise spirits, while other volunteers shoveled clients' snow.

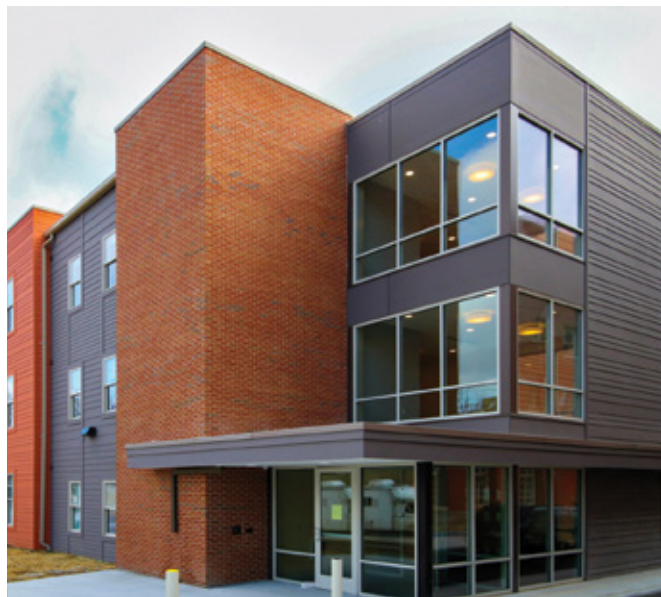
"We were looking at this whole situation with a holistic approach to try to touch people's lives with more than just food," Gottlieb says.

As a result of COVID-19, Deupree Meals On Wheels was profoundly changed for the better and is now more equipped than ever to meet the evolving needs of the community. ■



Honoring History at The Manse

Cincinnati's first African American-owned hotel provides more affordable living offerings in Walnut Hills. *By Bailey Gentry*



ERS, The Model Group, and Ohio Capital Corporation for Housing are collaborating on a unique, affordable housing project for seniors—the former Manse Hotel.

When ERS wanted to expand their affordable housing offerings in Walnut Hills, a property just two blocks away from the existing Walnut Court community caught their attention, though the buildings were in terrible disrepair and would have to be torn down.

As it turns out, those buildings were what was left of The Manse Hotel, the first African American-owned hotel in Cincinnati. In its heyday, The Manse and its trailblazing proprietor, Horace Sudduth, welcomed a slew of notable guests: the Harlem Globetrotters, Frank Robinson, James Brown, and many more. Listed in the *Negro Motorist's Green Book*, it was one of the few Cincinnati hotels welcoming African American travelers, and played an important role in the civil rights movement, including hosting the 1946 NAACP National Convention.

"The history of The Manse Hotel had been somewhat lost," says Joy Blang, Executive Director of Philanthropy at ERS. "When we learned that these buildings had been part of The Manse, it actu-

ally ended up being added to the National Historic Register. We then needed to figure out how to make the funding work to keep these buildings and their historical integrity."

In addition to renovating and restoring the former hotel to house 60 affordable living units for low-income seniors, finding a way to also honor The Manse's history was a nonnegotiable. Thanks to a significant gift from brothers Nash and Stan McCauley—who grew up directly across the street from The Manse in the '50s and '60s—and Nash's partner Diana Abbasy, the main lobby will permanently showcase an illustrated history of The Manse. The display will include some of the building's original components, including wallpaper from remnants that were salvaged during the renovation, and paintings by local artist Latausha Cox, whose recent work includes this past summer's Black Lives Matter mural in downtown Cincinnati.

"It's so important to educate people about The Manse, and this art display is going to honor its history and keep that alive," Blang says. ■

Transforming Madison Villa

By bringing safety and security to Madison Villa's residents, ERS invests in Madisonville itself. *By Baibley Gentry*



Like the flourishing neighborhood surrounding it, Madison Villa has an updated look following a major renovation completed at the end of 2020.

When ERS acquired the community now known as Madison Villa in 2016, it was not an enviable place to live. Bed bugs had set up camp inside the rundown apartment units while a high crime rate plagued the surrounding Madisonville neighborhood, making for “a pretty dark and depressing” place, says Bryan Reynolds, the VP of Marketing and Public Relations at ERS.

It quickly became clear that to truly transform the Madison Villa community, they'd first need to improve the safety of the property itself. “That’s where philanthropy really came in,” says Joy Blang, Executive Director of Philanthropy at ERS. In addition to tax credits that made it possible to invest millions of dollars into comprehensive renovations, ERS would need to put a little over \$200,000 toward additional safety and security enhancements. These included things like clearing out shrub overgrowth around the community, installing the highest grade steel fencing around the perimeter, adding security cameras and motion-detecting lights, and switching to a key fob entry system for residents—

all made possible thanks to more than \$112,000 in charitable donations.

The results have been “night and day,” Blang says. “They now have this lovely park-like setting with a gazebo, walking path, trees, and garden plots that residents feel safe to enjoy.”

And while the community has undergone a dramatic physical transformation, a generous donor couple has established provisions in their estate plan to create an endowment fund to provide for some of the ongoing needs of Madison Villa long into the future. Longtime active members of The Episcopal Church of the Redeemer, Gary R. Lubin and his late wife Janice, have supported programs serving Madisonville residents for years—like ERS.

It's community involvement like this that Blang says makes all the difference. “I think anyone who really goes into a community and does their part to make it nicer [encourages] the next person to do the same thing, and the next person...it's like this domino effect,” Blang says. “I think we've been a big part of that domino effect in Madisonville.” ■

Determined to Serve

Throughout 2020, the Woman's Board, a longstanding partner of Episcopal Church Home, continued their service from a distance.

By Elizabeth Miller Wood



Even with restrictions on activities and contact, the Episcopal Church Home Woman's Board pulled together to serve and support the needs of residents.

The Woman's Board has been a cherished partner of the ECH community since the early 1900s. In addition to financial contributions that support resident scholarship programs, the Woman's Board—consisting of approximately 75 women representing various parishes across Louisville—has also historically organized holiday parties, delivered mail, hosted resident sing-a-longs, and operated the community's gift shop.

Though COVID-19 put a wrinkle in the members' normal meetings and activities, they didn't let a pandemic squelch their long history of service.

"They've stepped outside their comfort zone to meet on Zoom and help from afar since they can't physically be in the building," says Bethany Heckel, Director of Development at ECH.

Hosted by Heckel, the virtual meetings occurred monthly. Members conducted their regular agenda and brainstormed creative new ways to serve ECH

residents, such as "card showers" during the holidays—hand-written, encouraging notes delivered to residents—and holiday goodie bags in lieu of traditional gatherings.

The Woman's Board also continued to make financial contributions to ECH, whether supporting the emergency response fund, providing funds for ancillary needs, such as laundry and salon services, or bolstering the ECH commitment to honor every resident's needs regardless of financial circumstance.

As a 501(3)(c) nonprofit, the Woman's Board is wholly independent of ECH, yet its sole reason for being is to serve and support the ECH mission.

Despite the challenges of 2020, the Woman's Board remained steadfast in its mission. "I've been really impressed. Their response speaks to their level of determination and commitment to continue their own mission to support us," says Heckel. ■

2020 Samaritan Circle

The Samaritan Circle is comprised of individuals who generously support ERS' annual ministry needs through the Good Samaritan Mission Fund, Emergency Relief Fund, and specific project requests with a donation of \$1,000 or more.

Platinum Level: \$10,000+

Anonymous
Alan Gast
Taylor+ and Anne Greenwald
JoAnn+ and Gary Hagopian
Andrew and Linda MacAoidh Jergens
Elizabeth Lilly+
Nash McCauley
David and Linda+ Stetson

Cortland and Annette Meader
Joseph and Marti Otto
Margot* and Bruce* Rowe
Miles and Linda Schmidt
The Revs. Bruce+ and Susan Smith
Doug and Kathy Spitler
Anne Warrington Wilson+
Joan^ and Stephen Wetzel

Don Gray
Jill Grisco
Melvin and Diana Haas
Anne W. Harrison
George and Amy Hill
Brad Miller and Marin Hollister
Gregory Hopkins+
Terrence M. Howe
Isabelle Hugo Nelson*

James Musgrove and Beverly Kirkpatrick
Jane Novak-Cook
Mr. Thomas Ottenjohn
Jennifer Payne+
Eli and Ilona Perencevich
Jim and Kate Powers
Harry and Helen Rabe Family Fund of Greater Cincinnati Foundation

Gold Level: \$5,000–\$9,999

Diana Abassy
Ann and Ben Blemker
Noel+ and Angela Horne
Linda Klump+
Bill+ and Liz Knodel
The Rev. John F.+ and Nanci Koepke
Jeff and Laura^ Lamb
Jeff+ and Jeanette March
Gates Smith+
Karen Smith and Paul DeMarco
Steve and Liz Sudberry
Mrs. John P. Williams, Jr.

Bronze Level: \$1,000–\$2,499

Anonymous (2)
Donna Allmandinger
Harold and Jennifer Angus
Harry and Ann Badanes
Gay Bain
Mary Ellen Baude
Ann Beighle^
Leah Bird
Eleanor Botts+
Dan and Megan^ Bradford Wilson Breiel+
Tina Breitenbach
Kathleen+ and Jim Brockman
Anthony Bruns+
Marilyn F. Bubel
Tara Carr
Gordon Christenson
Dean Colville and Marvin Collins
L. Barry Cors
Lee Cowan
Bill and Polly Culp
Sonia Daoud
Lillian Dartnall
Kristin^ and Alex Davenport
Marjorie E. Davis
Pierson Davis
Walter S. Faught
Walter and Mary Ann Feige
Tom and Diane Flautt
Orene Foreman*
Brian and Missy+ Fox
James M. Garvey, MD
David and Lauri Goodwin
Nancy Gottschalk

Nancy Ike
Kathy Ison-Lind^ and Bill Lind
Caroline James and Stephen Altschul
Steve Jungerwirth
Peter Juszczak^
Harry J. Kangis+ and Julia Hawgood
Thomas and Christine Kirkpatrick
K. Jay^ and Lana Kittenbrink
Vivian B. Kline
Jeff Kron
Theresa Kuhn
Corky Ladd
John and Susie Lame
Miss Louise Landen
Chuck+ and Peggy+ Landes
Keith+ and Sue Lawrence
Alishia D. Lee^
Susan Lehman and John Dalzell
Jean Lemon
Glenna Light
The Rev. David B Lowry
Mary M. Malone+
Bobby and Rachel Maly
Dr. and Mrs. Alan D. Manzler
Jack Martindell
William J. McGurn
Doug and Marcia Millar
Jenni Miller-Francis^
Earl and Jane Mills
Tom and Pam Mischell
Cece Mooney
Aram Moore

Tom+ and Sarah Regan
Earlene and David Retford
Bryan^ and Krista Reynolds
Katy Rosemont
Brian Rowe and Nancy Roberto
Elizabeth G. Rule
Ted Sarra*
John and Susan Schmidt
Rich+ and Madelyn Setterberg
Rhonna and Mark Shatz
William Sims
Geoff and Robin+ Smith
Virginia B. Smith
Albert+ and Liza Smitherman
Emerson Stambaugh^ and Michael Abernathy
Dan^ and Jennifer Steward
Pam Strayer
Bernie+ and Kathy Suer
Ann Swanson
Barbara Talbot
Emme Todd
Frances Turner
Frank^ and Ginny^ Uehlin
Grace Ulm
Nancy VandenBerg
Alice J. Wersel
Bill and Joan Wham
Dan Wheeler
Williams Family Fund of Greater Cincinnati Foundation
Jack and Elizabeth Williams
Anne Wilson
Dan+ and Nan Witten
Chip Workman+

Silver Level: \$2,500–\$4,999

Anonymous (2)
Dick+ and Lee Adams
James+ and Nip Becker
Joy^ and David Blang
Jon B.+ and Jeanne M. Boss
Jaqualine S. Brumm
The Rev.+ and Mrs. Darren R. S. Elin
Lissy Fabe and Chris Taylor
Roger+ and Michelle+ Foy
Elizabeth Grover
Ms. Lauren Hannan Shafer
Stanley A. Hooker, III "Tad"
Mrs. Paula Kollstedt
Mike+ and Kathy Krug
Robert and Josephine Linkins
Jim Maxwell
Alton R. Mayo

(+) Denotes an ERS Corporate, Foundation, or Affordable Living Board or Committee Member (^) Denotes an ERS Staff Member (*) Denotes an individual who passed away in 2019 or 2020

2020 Community Partnerships

ERS is grateful to the following foundations, corporations, churches, and other organizations that made contributions last year.

Gifts of \$20,000+

Arthur and Elizabeth Kuhn Fund of
Greater Cincinnati Foundation
H.B., E.W. & F.R. Luther
Charitable Foundation
Humana Foundation
L. & L. Nippert
Charitable Foundation
Meals On Wheels America
Model Group
Ohio Capital Corporation
for Housing
Ridge Stone Builders
& Developers
Rindsfoos Foundation
The Ellen A. and Richard C.
Berghamer Foundation
The Greater Cincinnati Foundation
The John A. Schroth Family
Charitable Trust, PNC Bank
US Bank

Gifts of \$10,000–\$19,999

Christ Church Cathedral Cincinnati
Church of the Redeemer
La Soupe*
Maxwell C. Weaver Foundation
Robert D. Stern Fund of
the Greater Cincinnati Foundation
Sysco Cincinnati*
The Diocese of Southern Ohio

Gifts of \$5,000–\$9,999:

ArtsWave
ATA Beilharz Architects
BMO Harris
CareSource Foundation
Community Health Foundation
The Dayton Foundation

Deupree House
Community Auxiliary
Home Care Assistance
of Southern Ohio LLC
Marjorie P. Lee Auxiliary
Marjorie P. Lee Chapel Fund
Millennium Business Systems
NextStep Networking
PNC Bank
US Bank Foundation and
Community Relations

Gifts of \$2,500–\$4,999

William P. Anderson Foundation
Brunner's Lawn
and Services, LTD
Fort Washington Investment
Advisors, Inc.
Gallagher
Graydon
The Ed and Joann
Hubert Family Foundation
Lutheran Benevolent Society
Medpace
Paycor
Planes Moving and Storage
Premier Mail & Fulfillment
RDL Architects
SFCs Inc.
St. Thomas Episcopal Church
Bruce S. and Caroline C. Taylor
Fund of Greater
Cincinnati Foundation
Tidwell Group
University of Cincinnati
Department of Neurology

Gifts of \$1,000–\$2,499

Abstract Displays, Inc.

ASI Signage
Ascension & Holy Trinity
Braun Heating and Air
Conditioning
Buerger Energy
Calvary Episcopal Church
Carpetland
Christ Church Glendale
Christ Episcopal Church
Cincinnati Coin Laundry
Deffet Group, Inc.
Frost Brown
Todd Attorneys
J Construction Co., Inc.
Kathman Electric Co., Inc.
Ken Neyer Plumbing
Key Bank
Knox Presbyterian Church
Kroger Community Rewards
Messer Construction
Pinnacle Financial Advisors
Relequent, LLC
RiverHills Bank
RSM US LLP
St. Barnabas Episcopal Church
St. Paul's
Episcopal Church
Summertime Kids Greater
Cincinnati Foundation
Superior Care Plus
The Andrew Jergens
Foundation
Thomson MacConnell
Cadillac
US Bank Wealth
Management & Security Services
William's Wishes
Xavier University
Ziegler Senior Living Finance

2020 Living Legacy Society

The Living Legacy Society recognizes friends who have informed us that they have included ERS in their will, estate plans, or other deferred gift arrangement. We are grateful to these donors for helping ensure that ERS continues to serve older adults for years to come.

Anonymous (5)
Gay and St. John* Bain
Leah Bird<
Young Bongfeldt
Mr. and Mrs. Jon B. Boss
Eleanor A. Botts
Jill and Ken Burkman
Anna K. and
George G.* Carey, IV
Mr. and Mrs.
Donald Y. Carpenter
Mr. and Mrs. A. B. Closson, Jr.
Diana L. Collins
Christopher and
Melissa Cowan
Kit Duval
Robert Evans and Brian Miller
Mary Beth Foxworthy
James M. Garvey, MD
Tal* and Alan Gast
Al and Sandy* Harris
Robert and Judith Heaton
Barbara and
Theodore High
Stanley A. Hooker, III “Tad”
Angela and Noel Horne
Kathleen N. Ison-Lind
Harry Kangis
and Julia Hawgood

Susan Kellogg
K. Jay and
Lana Kittenbrink
Kathy and Mike Krug
Jane Kuntz
Jeff and Laura Lamb
Miss Louise Landen
Keith and Sue Lawrence
Susan Lehman
and John Dalzell
Mr. and Mrs.
Robert G. Linkins
The Rev. David Lowry
Janice W.* and
Gary R. Lubin<
Joan and Phil* Maechling
Trish* and
Jack Martindell
Tom and Nancy McOwen
Cece and Tom* Mooney
Ken and Pam Paley
Eli and Ilona
Perencevich
Joan Trittipio Perkins
Sue and Tom* Pontius
The Rev. and
Mrs. William E. Rathman
Dr. Elizabeth G. Rule
Paul and Mary Lee Scheper
Michael T. Schueler

Elizabeth C.B.
and Paul G. Sittenfeld
The Revs. Bruce
and Susan Smith
Geoff and Robin Smith
Doug and Kathy Spitler
Barbara Sporck-Stegmaier
Emerson Stambaugh and
Michael Abernathy<
Linda and David Stetson<
Dr. and Mrs.
Thomas U. Todd
Frank and
Ginny Uehlin
Pat and Bill Victor*
Mr. James Wersching
Jack and
Elizabeth Williams
Anne and Samuel* Wilson

Planned gifts realized in 2020

Estate of Karen Bell
Estate of Margaret Bigham
Estate of Chester Cavalier
Estate of S. Garry
and Connie Howell
Estate of Mrs. Betty W. Pippert
Estate of the
Reverend Milton Saville
Estate of John Stevenson

(<) individual joined in 2020

(+) individual served as an ERS Board or Committee Volunteer; (^) individual served as a member of the ERS Staff; (*) individual passed away in 2020, 2021, and prior.

Note: Every effort was made to accurately recognize donors for their generous contributions. Please contact the ERS Foundation office at (513) 979-2308 if you believe an error has been made in the listing of your gift so that we can correct it in future listings.

2020 Episcopal Church Home Donors

The Episcopal Church Home would like to recognize the following contributors for the extraordinary kindness and generosity they have expressed in 2020 through their philanthropic investments of \$1,000 or more.

Gifts of \$40,000 and above

Emily Hundley

Gifts of \$10,000–\$19,999

Anonymous

ECH Woman's Board

June Hampe

Michael Hirn

Kenneth W. Moore

Phillip B. Newman, III +

Anonymous

PCA Pharmacy

Gifts of \$5,000–\$9,999

William C. Almstedt Foundation

Delta Dental of Kentucky

Joanna+ and William Panning

Stephen and Kelly Priebe

Gordon+ and Nancy Ragan

Juliette Willis

Katie Winkelhake

Gifts of \$1,000–\$4,999

Anonymous

Beargrass Fund

Mike Berry+

Edith Bingham

Michael A. Boice

Anonymous

CMP Grants

Judith Conn

W. Thomas Cooper+

Anne Dishman

Mary Dunham

Caroline Eddleman+

Beverly^ and Curwin Edwards

Jean Frazier

Reverend John Fritschner+

Thomas Gebhart

Bethany Heckel^

Judith R. Hirn*

Jennifer and Erick Johnson

John+ and Linda Kiesel

Patricia King

Laura^ and Jeffrey Lamb

Kendrick and Loretta* Lewis

Harry and Carol Madison

Michael and Betsy Mahoney

Ellen Marshall

Fred and Ann Mudge

Gibbs+ and Lynn Reese

Mary Louise Sandman

Marian Sanford*, Sheppard Sanford, Ellen Sanford, Craig Sanford, and Sally Penfield

Reverend Alfred Shands

Nicole Sochor

St. Luke's Chapel

Nelson+ and Janice Toebbe

Ellen Van Nagell

Priscilla Veatch

Weezie Walker

Dorothy Wesley*

Betty Wiegand

Estate of Ann York Franklin*

Morton Society Members:

The John P. Morton Society celebrates founder John P. Morton by recognizing individuals who have remembered Episcopal Church Home in their estate plans.

Reverend Georgine Buckwalter

Ann Davis

Stephen and Barbara Ellis

Ben and Sarah* Few

James Hendon

Keith Knapp

Robert Nesmith

Anne Vanderburgh+

Virginia Woodward

(+) individual served as an ECH Board or Committee Volunteer; (^) individual served as a member of the ECH Staff; (*) individual passed away in 2020, 2021, and prior.